

UOB LIVE

A nighttime photograph of the UOB LIVE building in the EM District. The building's facade is illuminated, showing the 'UOB LIVE' logo at the top and 'EMSPHERE' on a lower level. Large glass windows reveal an interior space with various displays and people. In the background, a city skyline is visible with several fireworks exploding in the dark sky. The image is overlaid with a large, diagonal graphic element consisting of a red-to-blue gradient.

Empowering Entertainment in the heart of EM District
6th Floor EMSPHERE

Technical Information

CONTENT

1	Introduction	pg. 3
2	Venue Address	pg. 3
3	Venue Contact Details	pg. 3
4	Location	pg. 4
5	Truck & Vehicle Access & Exit	pg. 5
6	Loading Dock, Freight & Service Lifts	pg. 6
7	Car Parking	pg. 7
8	Dressing Rooms	pg. 8
9	Green Room & Production Office	pg. 8
10	VIP Lounge	pg. 8
11	Wi-Fi	pg. 8
12	Backstage Floor Plan	pg. 9
13	Back of House Finishing Kitchen	pg. 10
14	Front of House Concession Stands	pg. 10
15	Back of House Finishing Kitchen Floor Plan	pg. 11
16	Pre-Function/Event Zone & Main Hall Floorplan	pg. 12
17	Pre-Function/Event Zone Dimensions & Floor Loading	pg. 13
18	Pre-Function/Event Zone Power Provision	pg. 13
19	Main Hall Dimensions & Floor Loading	pg. 14
20	Main Hall Clearance Height	pg. 15
21	Main Hall Catwalk, Rigging & Load Capacity	pg. 16
22	Main Hall Seating & Standing Configurations	pg. 17
	Theatre mode	pg. 17/18
	Lyric Mode	pg. 19/20
	Intimate Mode	pg. 21/22
	Centre/Ring Mode	pg. 23/24
	Standing & Retractable Mode	pg. 25/26
	Full Standing Mode	pg. 27
	Banquet Mode	pg. 28
	Exhibition Mode	pg. 29
23	VIP Suites	pg. 30
24	Technical Information	pg. 31
	a) Stage	pg. 31
	b) Crowd Barrier	pg. 31
	c) Rigging	pg. 32
	d) Power	pg. 33
	e) Audio	pg. 36
	f) Lighting	pg. 37

1. INTRODUCTION

Situated in the new and vibrant EM District of Bangkok, and uniquely positioned atop of the world class EM Sphere shopping mall, UOB Live is a multi-purpose concert and events hall with a capacity of up to 6,000 people. The venue has the capability to host domestic, regional, and international artists, a range of sporting events, cultural celebrations, family entertainment, comedy shows, exhibitions, gala dinners, and banquets. The highly adaptable design includes a rolling stage system, full crowd control barrier, L-Acoustics K2 sound system, a range of lighting, rigging, stage draping equipment and retractable seating that enables the venue to be scaled to suit many forms of events.

The purpose of this document is to provide an introductory guide to hirers about the technical capabilities of UOB Live to host your event. More detailed information i.e. technical details, drawings, floor plans, seating manifests etc., will be provided and developed during the venue hiring process.

2. VENUE ADDRESS

628 Sukhumvit Road
6th Floor Emsphere
Klong Tan, Klong Toey
Bangkok 10110, Thailand

3. VENUE CONTACTS

General Manager

Name: Craig Grossarth
Email: craig.gro@uoblive.asia
Phone: (+86) 183 2174 1550

Chief Financial Officer

Name: Pattanun Kitcharoenrot
Email: pattanun.kit@thebangkokarena.com
Phone: (+66) 8 1342 7282

Event Services Manager

Name: Nareauchid O-ranwong
Email: nareauchid.ora@uoblive.asia
Phone: (+66) 6 4454 4289

Building Services Manager

Name: Watcharawut Sriboonruang
Email: watcharawut.sri@uoblive.asia
Phone: (+66) 8 1582 1619

Safety & Security Manager

Name: Kittiphoom Kerdman
Email: kittiphoom.ker@uoblive.asia
Phone: (+66) 6 2979 9198

IT Manager

Name: Vittawat Jumongkol
Email: vittawat.jum@uoblive.asia
Phone: (+66) 6 1532 4966

AV Supervisor

Name: Anuwat Wangthong
Email: anuwat.wan@uoblive.asia
Phone: (+66) 6 1458 6054

Venue Sales Manager

Name: Kunlaya Poonyabhitak
Email: kunlaya.poo@uoblive.asia
Phone: (+66) 8 1889 2478

4. LOCATION

Main route to UOB Live is Sukhumvit Road. Entrance is via RAMA 4 road and Sukhumvit 22.

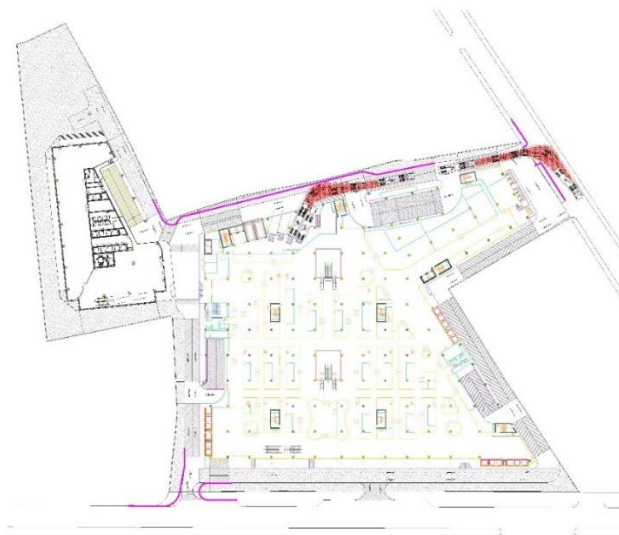


5. TRUCK & VEHICLE ACCESS & EXIT

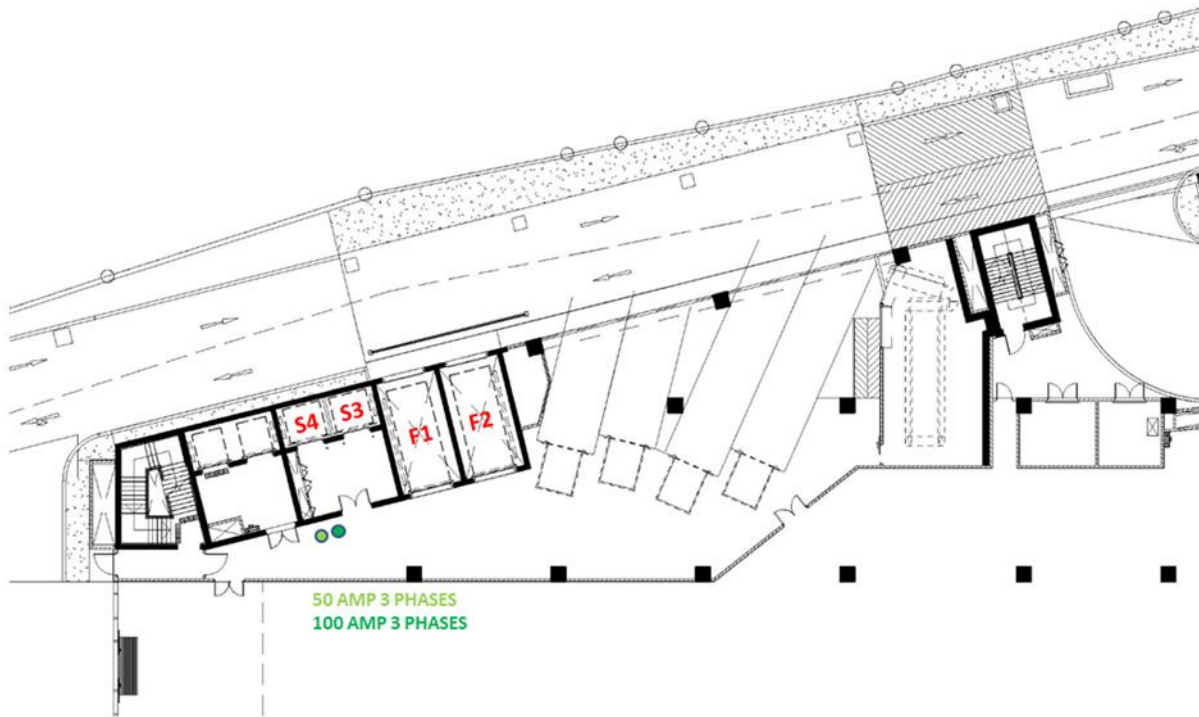
Truck access to the loading dock area is directly off Sukhumvit Road.



Truck exit is directly into Soi Sukhumvit 22.



6. LOADING DOCK, FREIGHT & SERVICE LIFTS



Loading Docks

- 2 bay 40' container truck docks with dock levelers.
- 2 bay 1 Ton pickup truck docks, with dock levelers.
- Equipped with 50 AMP 3 PHASE and 100 AMP 3 PHASE power.
- All load-in/out requirements and deliveries must be coordinated with the ASM Venue Staff in advance.

Freight Lifts F1 & F2

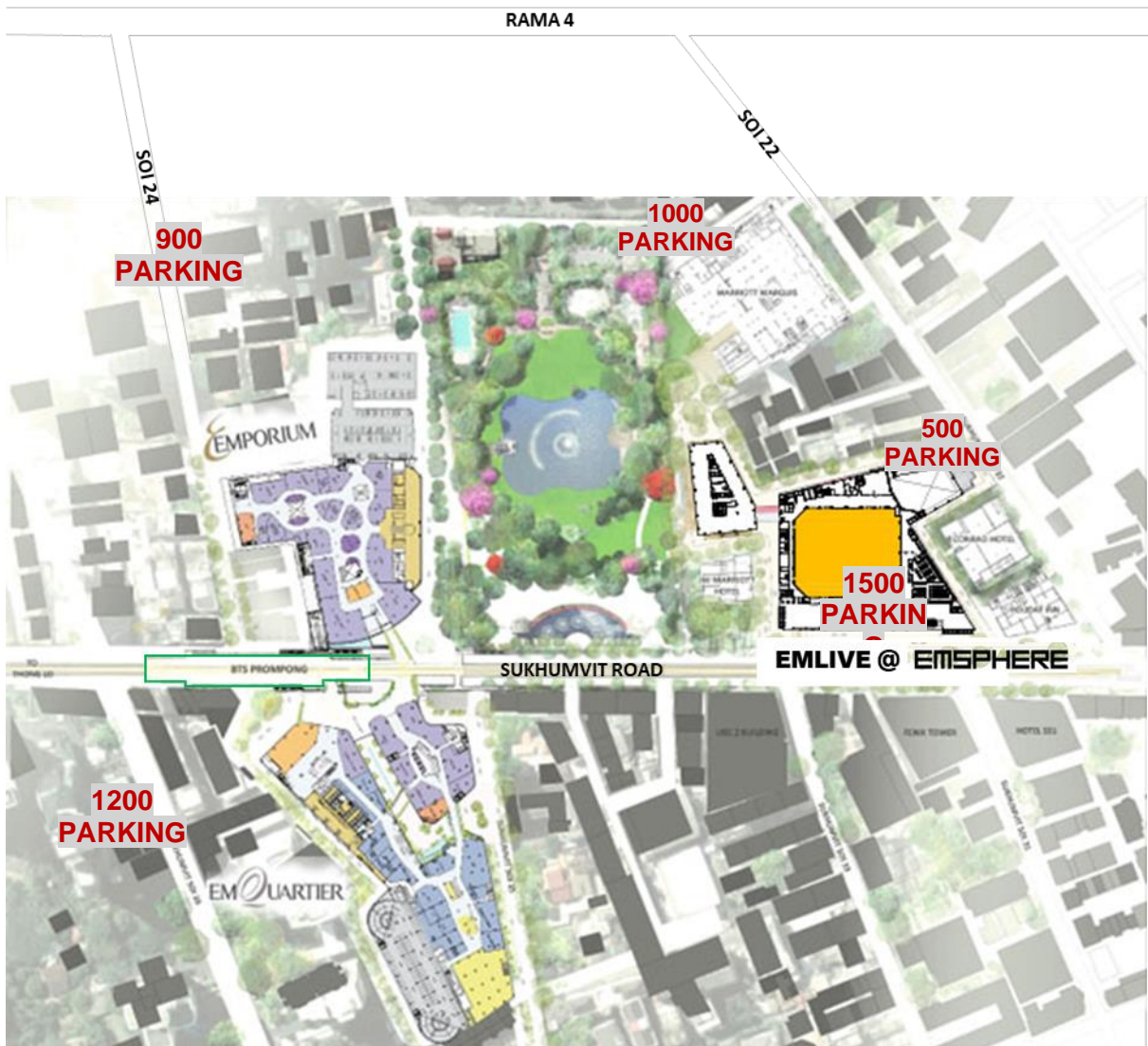
- 5.5-ton freight lifts to 6th floor where UOB Live is located.
- Lift car size 2.50m(W) x6.25m(L) x3.50m(H).
- Door size at 2.50m(W)x3.20m(H).

Service Lifts S3 & S4

- 2.5-ton Service lifts to 6th floor where UOB Live is located.
- Lift car size 2.10m(W) x2.30m(L) x2.90m(H).
- Door size at 1.60m (W) x2.40m(H).

7. CAR PARKING

- 30 exclusive car parking spaces UOB Live available on 4th Floor (subject to contract).
- 1,500 public car parking spaces available at EM Sphere shopping mall.
- There are also public car parking spaces at adjacent EM District as follows:
 - 900 car park spaces at Emporium.
 - 1,200 car park spaces at EM Quartier.
 - 1,000 car park spaces at Marriot Marquis hotel.
 - 500 car park spaces at Holiday Inn hotel.



8. DRESSING ROOMS

All dressing rooms are located on the 6th floor behind the stage with access to hard wired internet and telephone line.

- Headliner room #01: 4m. wide x 6m. long ensuite with shower.
- Headliner room #02: 4m. wide x 6m. long ensuite with shower.
- Headliner room #03: 4m. wide x 6m. long ensuite with shower.
- Chorus Dressing room: 5m. wide x 12m. long with locker, benches, toilets showers, dressing desks and chairs.

There are also two changing rooms with lockers, toilets, showers on 6M floor upon request.

- Male change room: 10m. wide x 7m. long.
- Female change room: 10m. wide x 7m. long.

9. GREEN ROOM & PRODUCTION OFFICE

- Green Room: 4.5m. wide x 6m. long, with minibar, and toilet on stage level (6th Floor), directly behind the stage.
- Production Office: 4.5m. wide x 6m. long on stage level (6th Floor) behind the stage.
- Pantry: 2.5m x 6.0m. pantry that will/can share with the VIP Lounge.

10. VIP LOUNGE

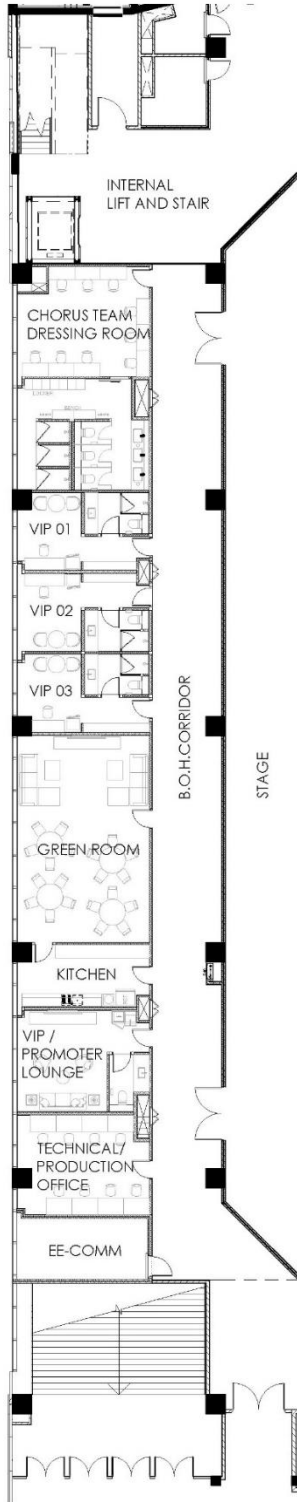
- The VIP Lounge 9.5m. wide x 6m. long, on stage level (6th Floor), directly behind the stage.
- Pantry 2.5m x 6.0m pantry 2.5m that will/can share with the Green Room.

11. Wi-Fi

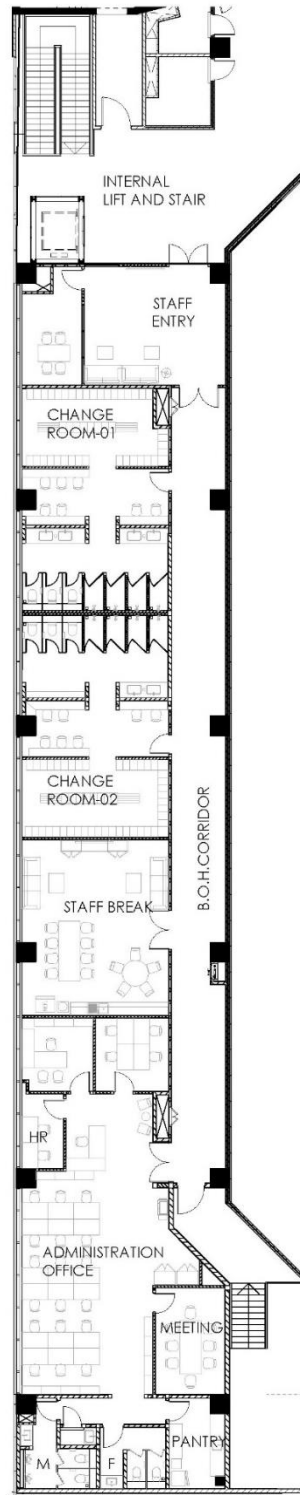
Wi-Fi is available throughout the venue. Login credentials will be posted in every room. Hardwired internet is available in each dressing room and production office.

12. BACKSTAGE FLOOR PLAN

Backstage (L6)



UOB Live Office (L6M)



13. BACK OF HOUSE FINISHING KITCHEN

UOB Live is equipped with a finishing kitchen with fixed F&B equipment as follows:

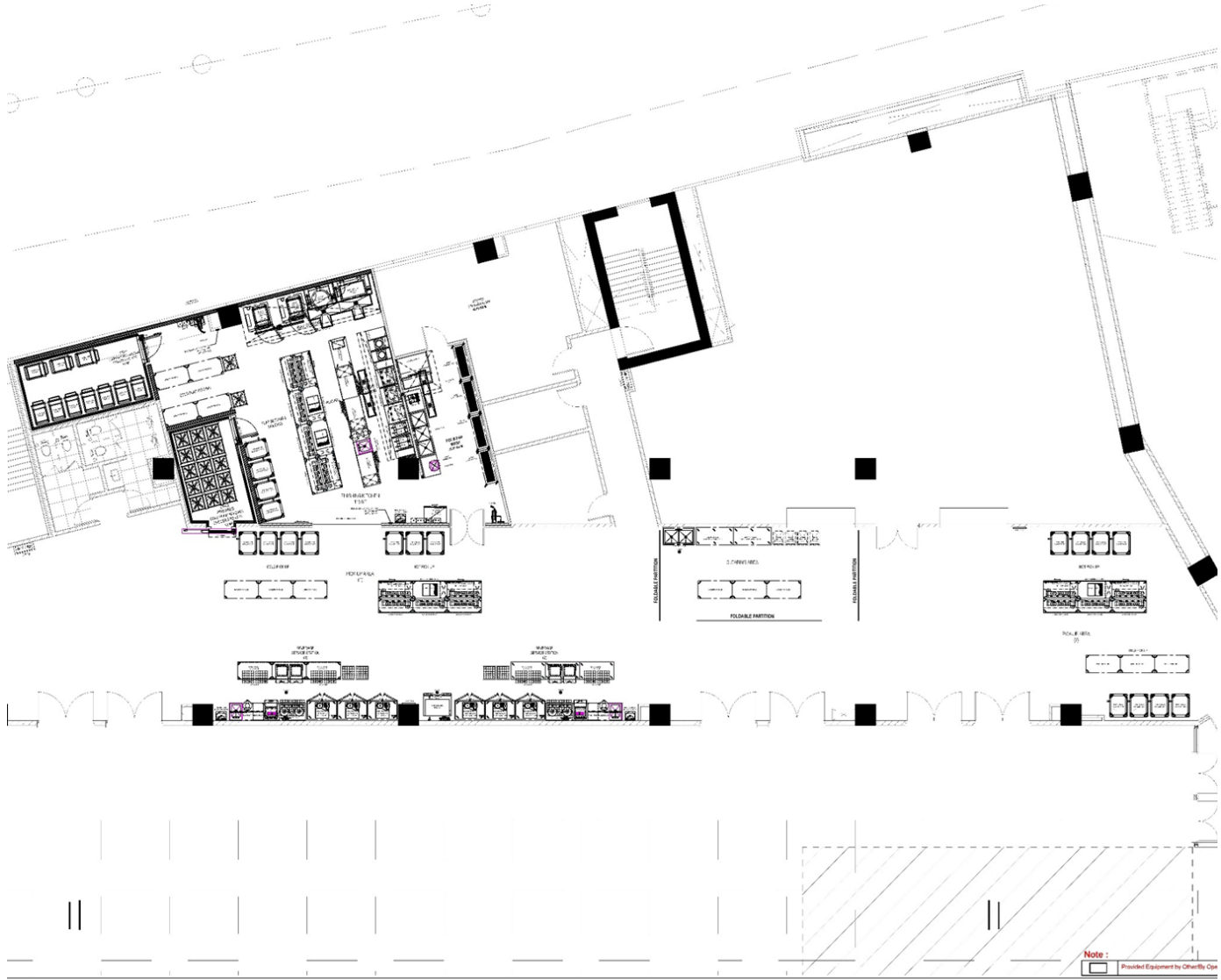
- Cooked food holding chiller 0 to +5°C: 16m².
- Prepared cold food holding chiller 0 to +5°C: 12m².
- Finishing kitchen: 115m².
 - Cold plat setting.
 - Bulk cooking.
 - Plating.
 - Plat setting & holding.
 - Cooking / heating.
- Pot & pan wash: 22.5m².
- Kitchen steward store: 42m².
- Pick-up area: 360m².
 - Hot pick-up.
 - Cold pick-up.
 - Beverage.
 - Service station.
 - Clearing area.

14. FRONT OF HOUSE CONCESSION STANDS

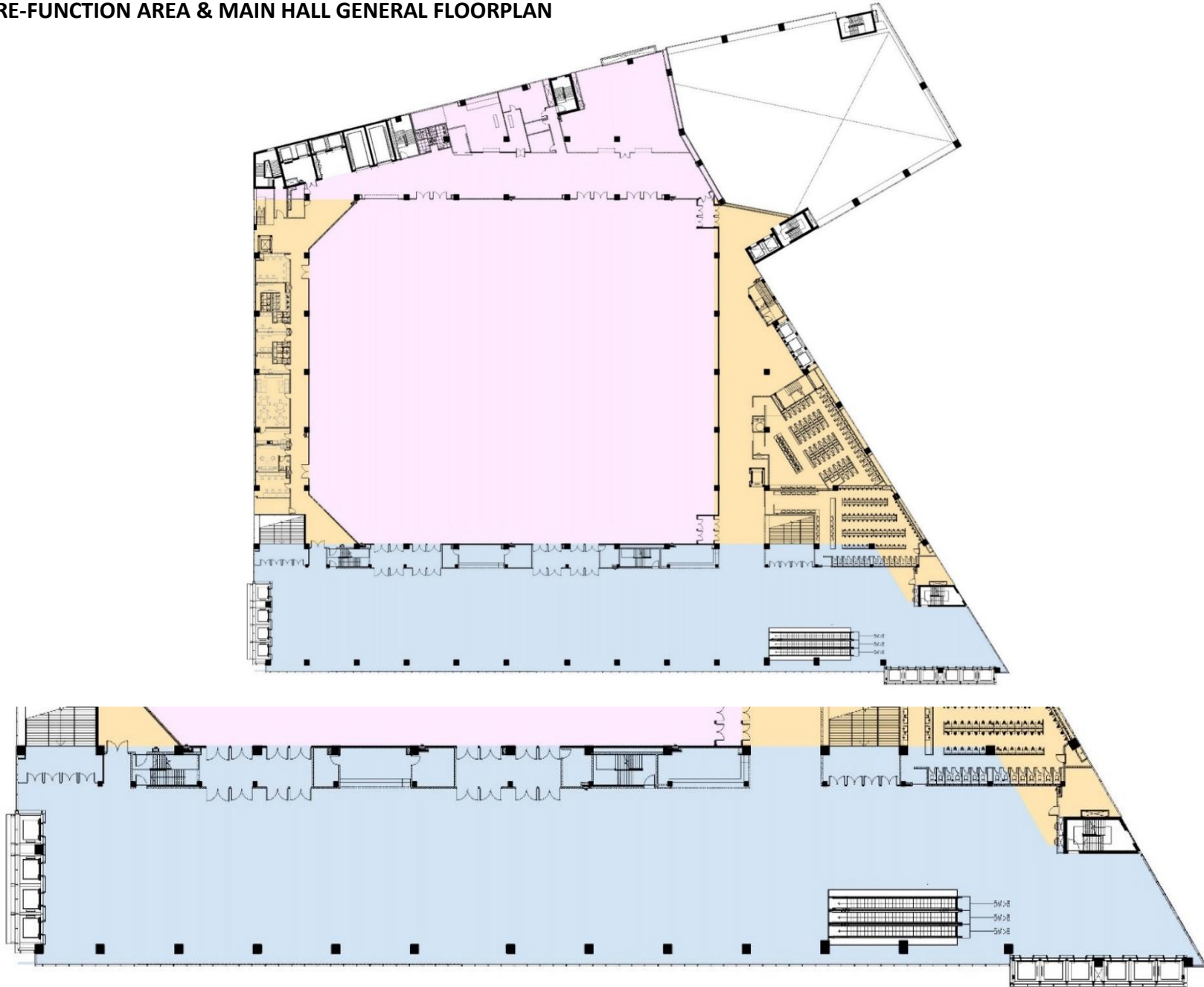
The Pre-Function Area will accommodate up to 10 mobile concession stands for the sale of light snacks and beverages. The positioning of the concession stands will be determined on an event-by-event basis.

The concession stands will be operated by UOB Live.

15. BACK OF HOUSE FINISHING KITCHEN FLOOR PLAN

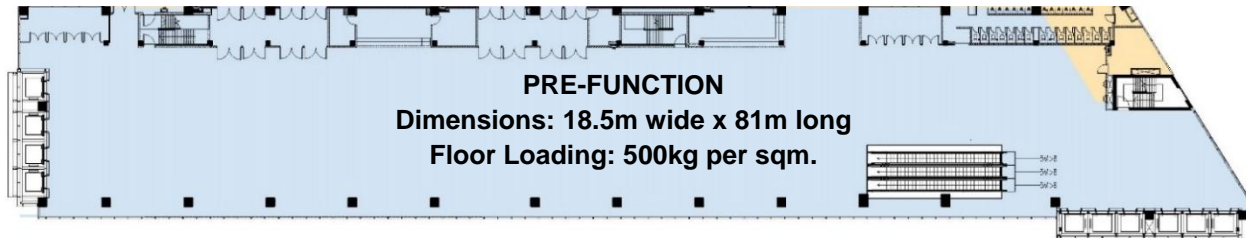


16. PRE-FUNCTION AREA & MAIN HALL GENERAL FLOORPLAN



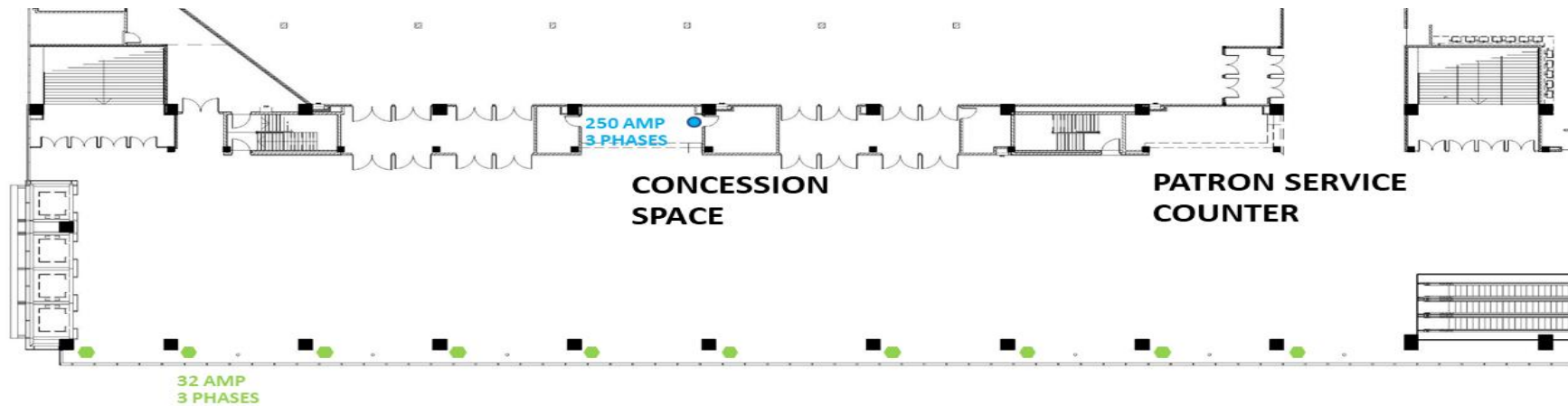
17. PRE-FUNCTION AREA DIMENSIONS & FLOOR LOADING

- The Pre-Function Area is 18.5m wide and 81m long (1,498.5m²).
- The floor loading at all points in 500kg/m².



18. PRE-FUNCTION AREA POWER PROVISION

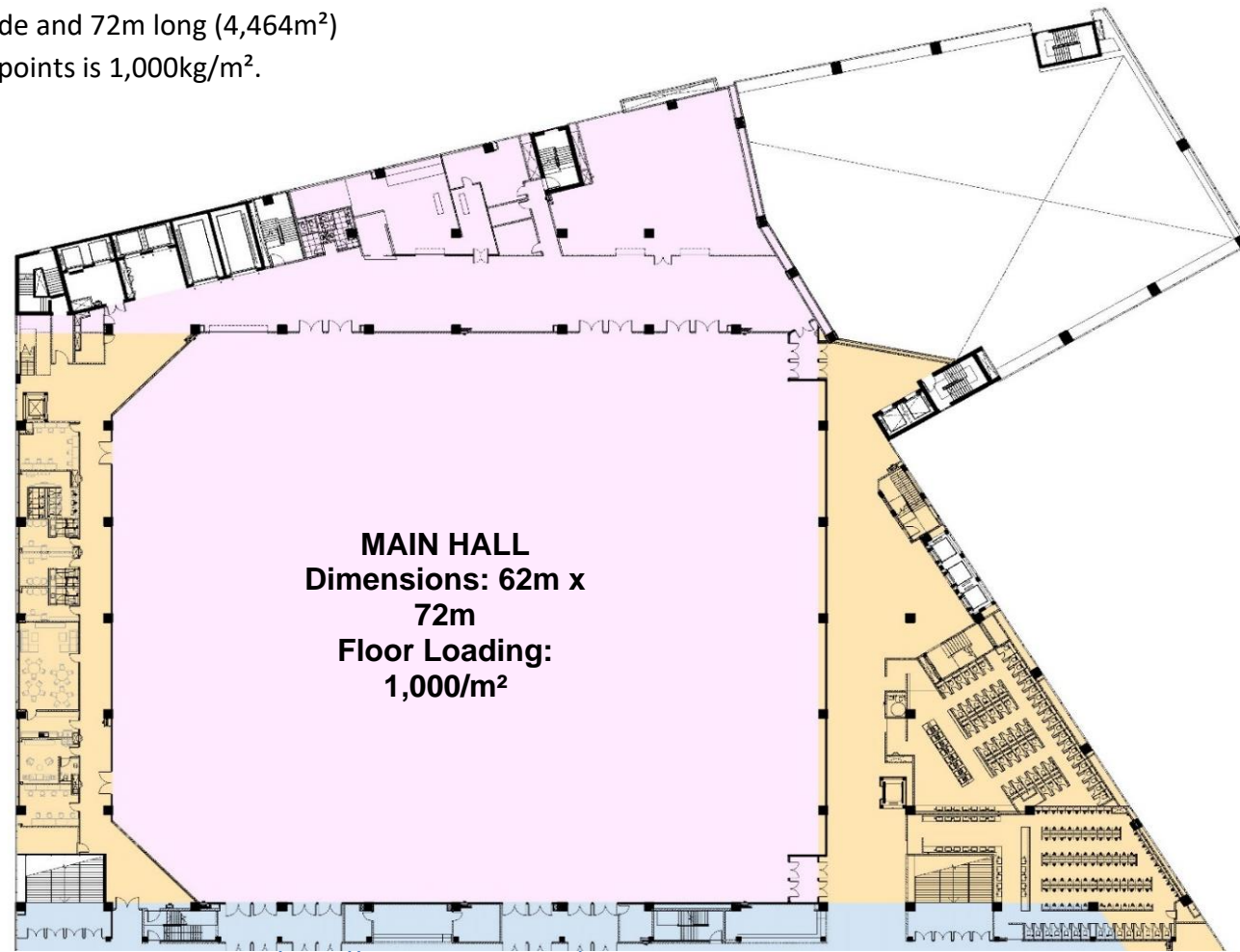
- 10 x 32 Amp 3 phase at column bases
- 3 hanging points (500kg per point) at each column bay.



Opening Edition – January 2024

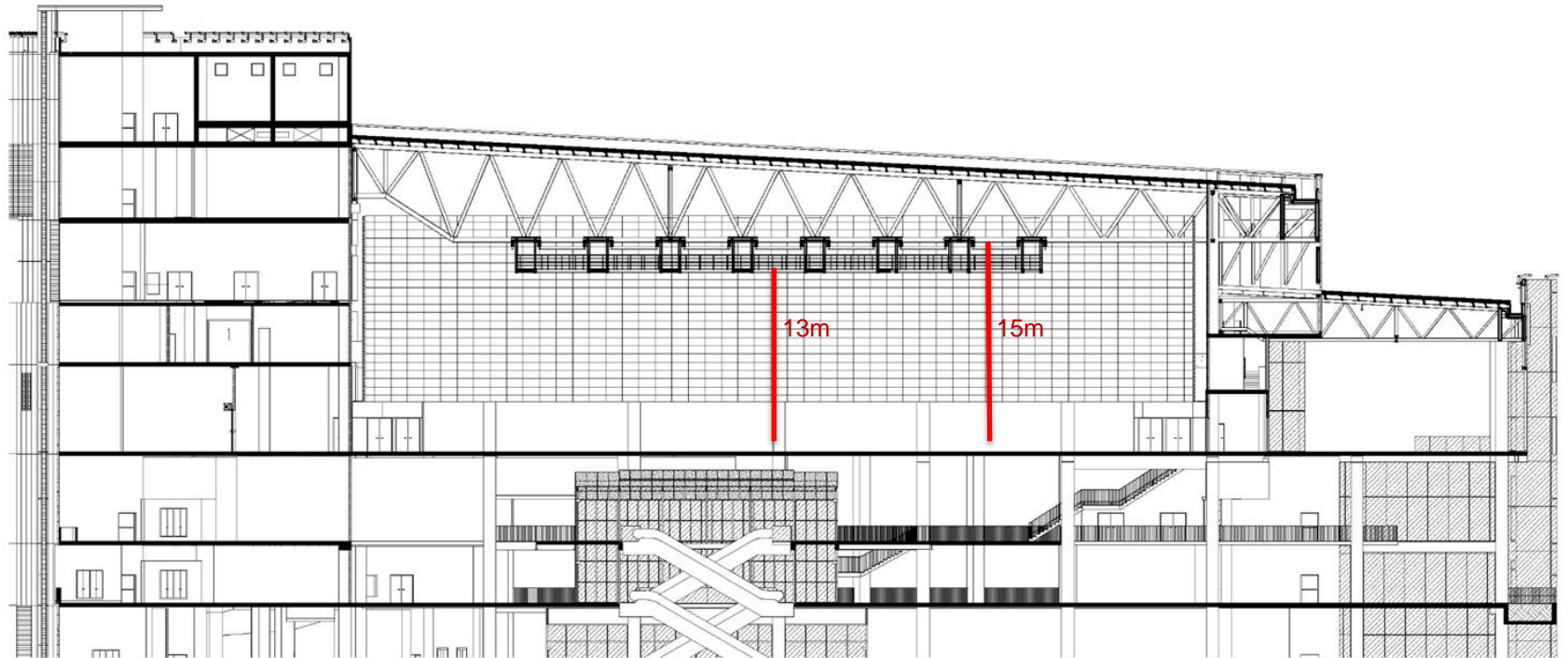
19. MAIN HALL DIMENSIONS & FLOOR LOADING

- The Main Hall is 62m wide and 72m long (4,464m²)
- The Floor Loading at all points is 1,000kg/m².



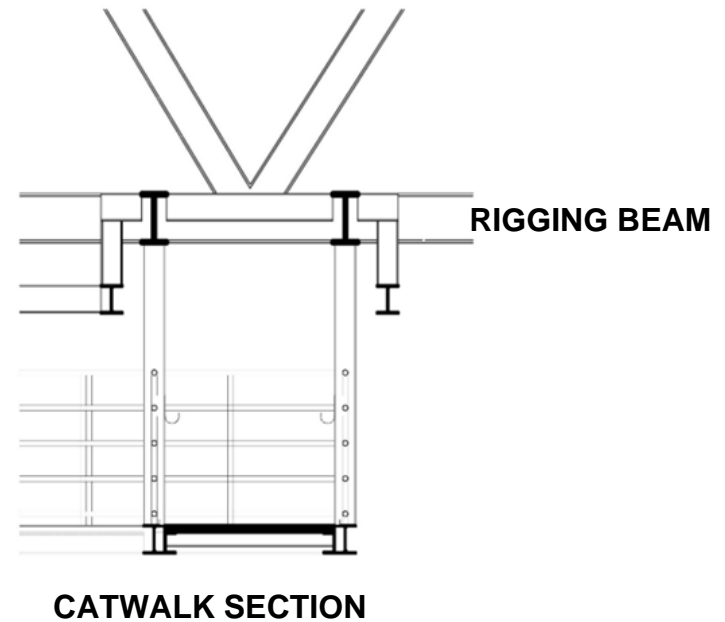
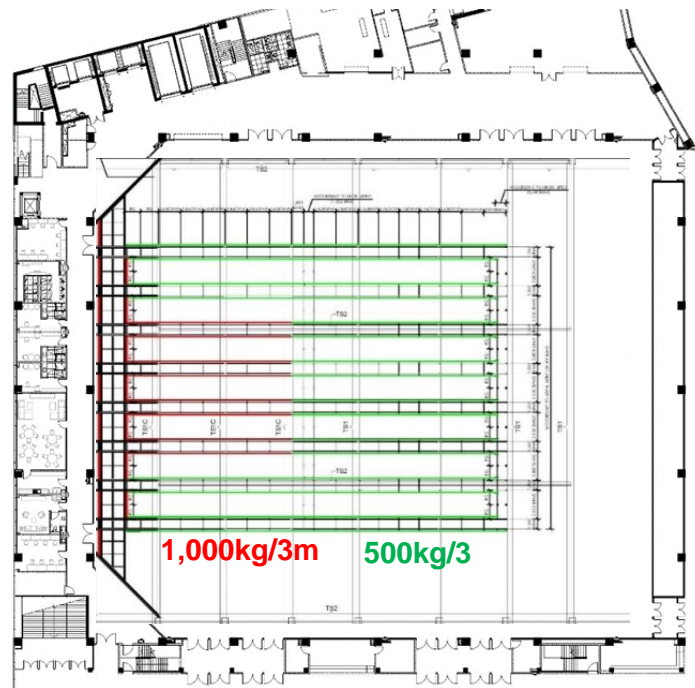
20. CLEARANCE HEIGHT

- The floor to underside of the catwalk is 13m.
- The floor to the underside of the roof truss is 15m.



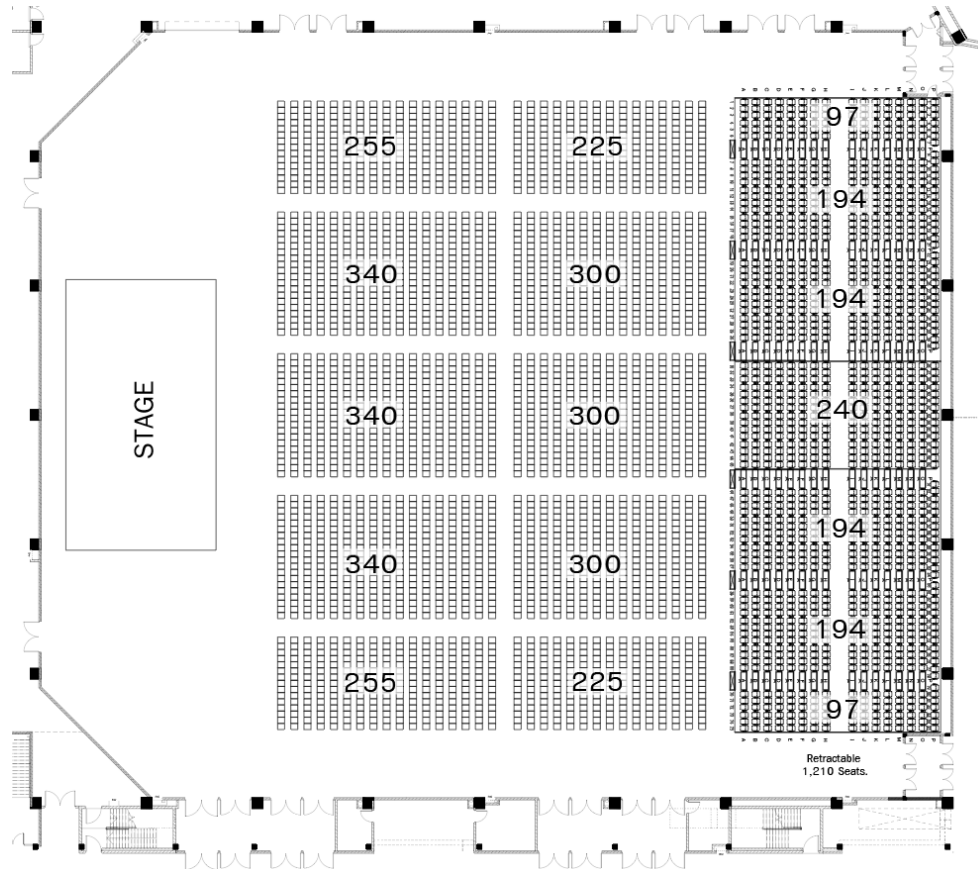
21. MAIN HALL CATWALK, RIGGING & LOAD CAPACITY

- 8 catwalks over the stage and majority of the floor area, accessible via a service lift.
- 16 rigging beams on both sides of catwalk.
- Hanging load capacity of 1,000kg every three linear meters (red) and 500kg every three linear meter (green) as per diagram below.
- All rigging must be approved and coordinated by UOB Live staff in advance of any production being installed in the venue.



Opening Edition – January 2024

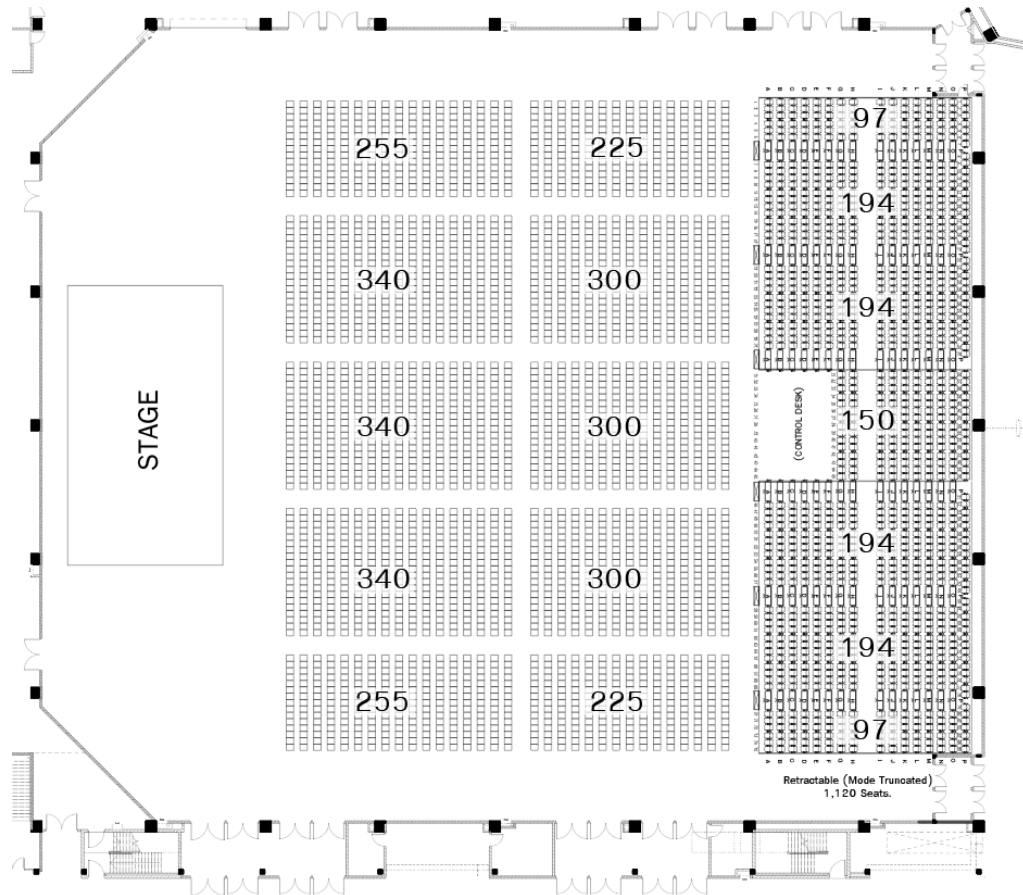
22. MAIN HALL FLOORPLAN EXAMPLES



a) THEATRE MODE A*: 4,090
2,880 floor seats
1,210 retractable seats

*Subject to final production overlay and seating plan

Opening Edition – January 2024

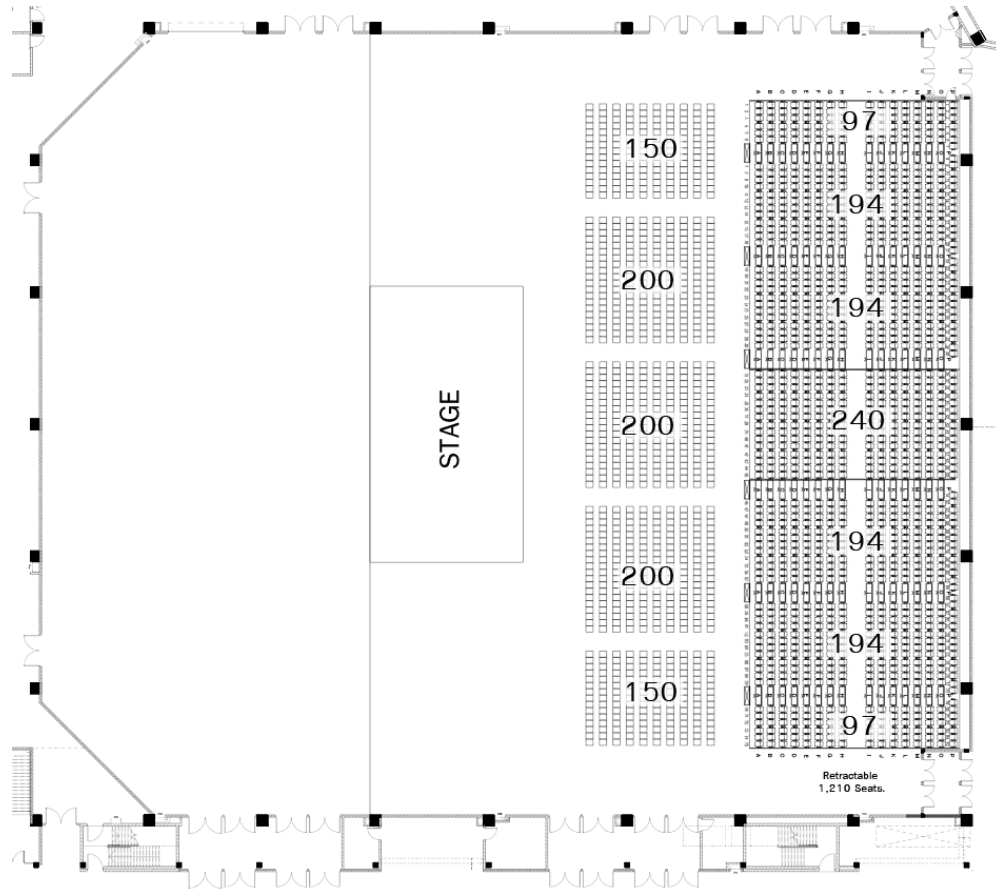


b) THEATRE MODE B*: 4,000

2,880 floor seats

1,120 retractable seats with control desk of 5.60m x 8.50m in the middle of retractable seats

*Subject to final production overlay and seating plan

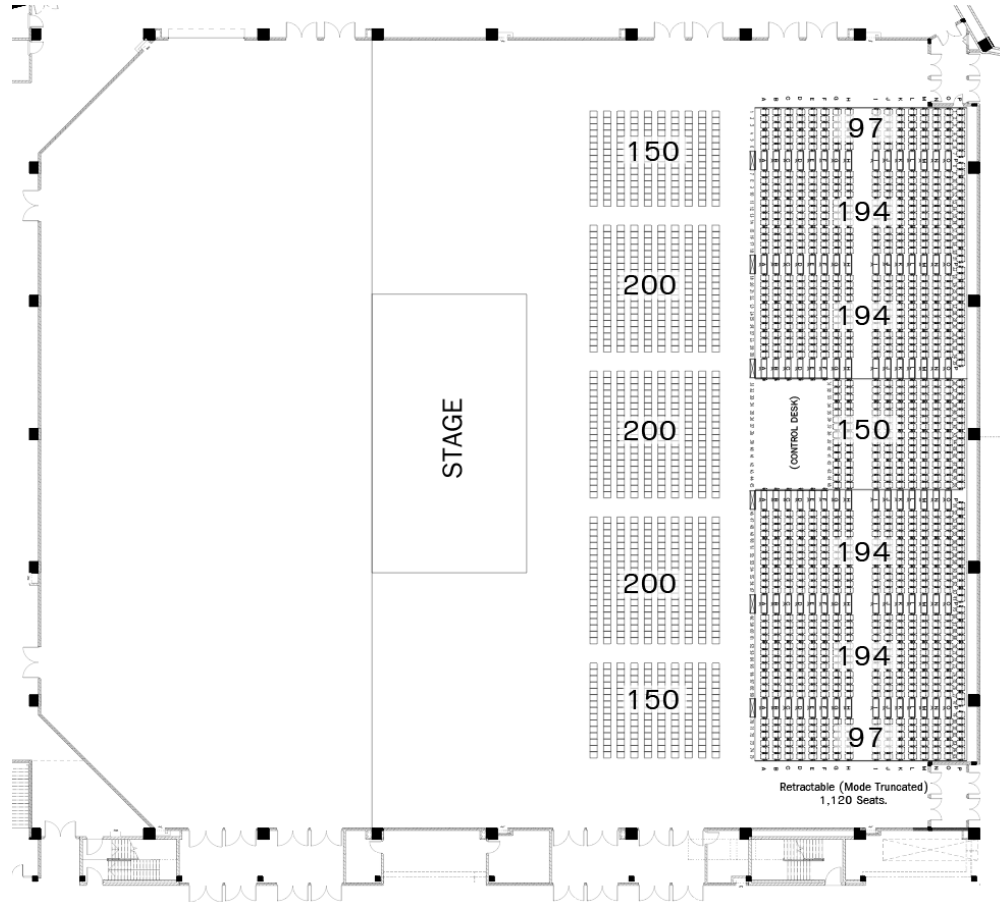


c) LYRIC MODE A: 2,110*

900 floor seats

1,210 retractable seats

*Subject to final production overlay and seating plan

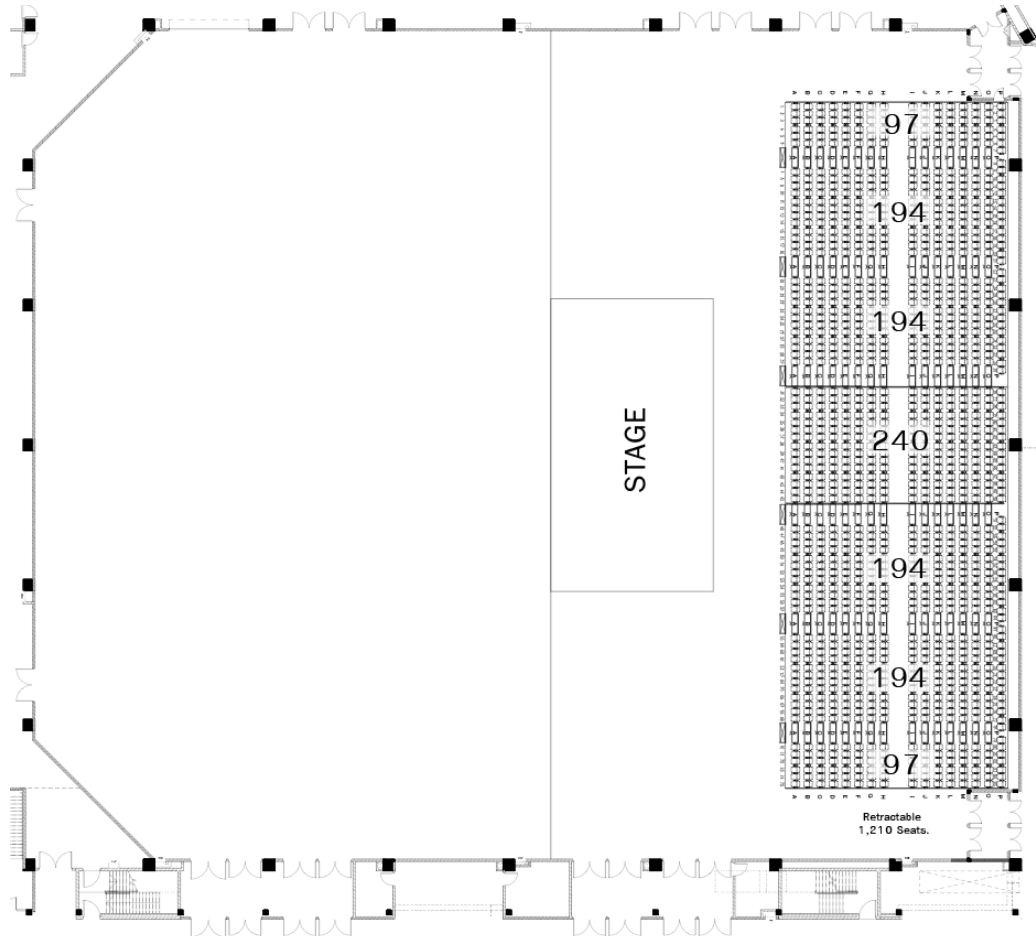


d) LYRIC MODE B: 2,020*

900 floor seats

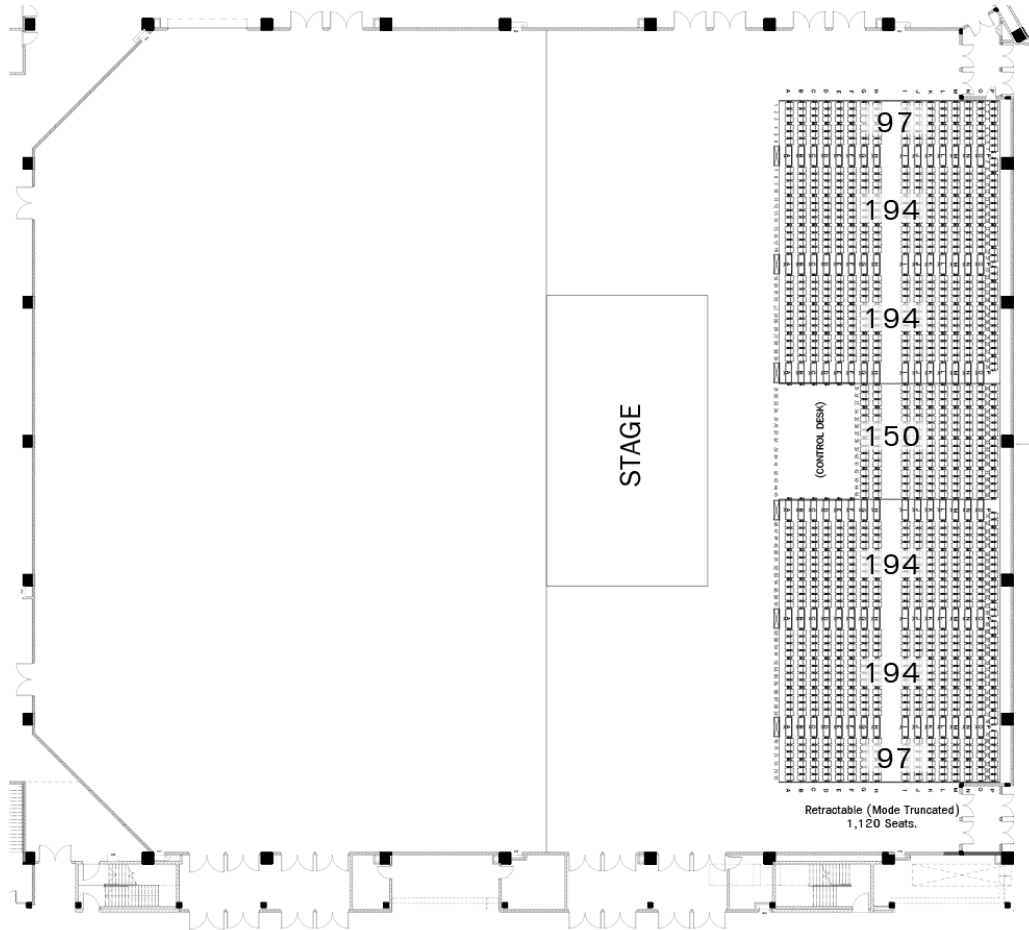
1,120 retractable seats with control desk of 5.60m x 8.50m in the middle of retractable seats

*Subject to final production overlay and seating plan



e) **INTIMATE MODE A: 1,210***
1,210 retractable seats

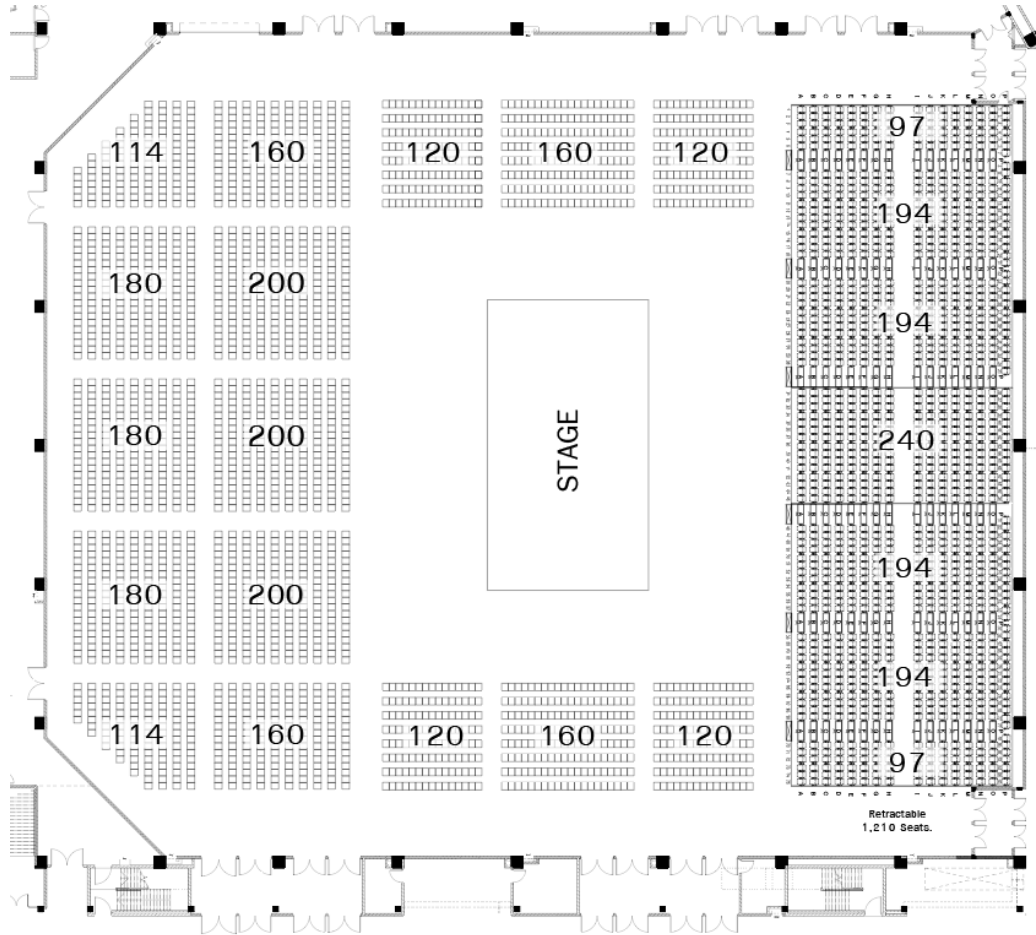
*Subject to final production overlay and seating plan



f) INTIMATE MODE B: 1,120*

1,120 retractable seats with control desk of 5.60m x 8.50m in the middle of retractable seats

*Subject to final production overlay and seating plan



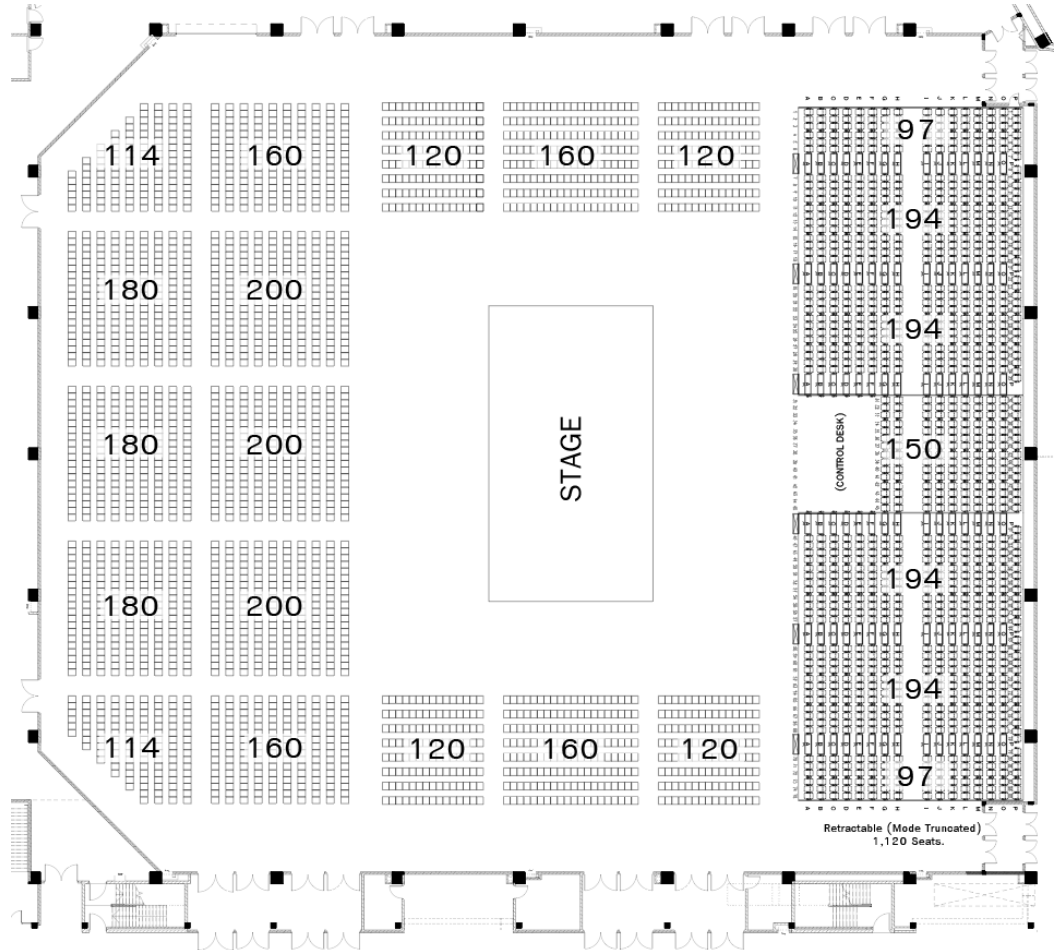
g) CENTRE STAGE MODE A: 3,698*

2,488 floor seats

1,210 retractable seats

*Subject to final production overlay and seating plan

Opening Edition – January 2024

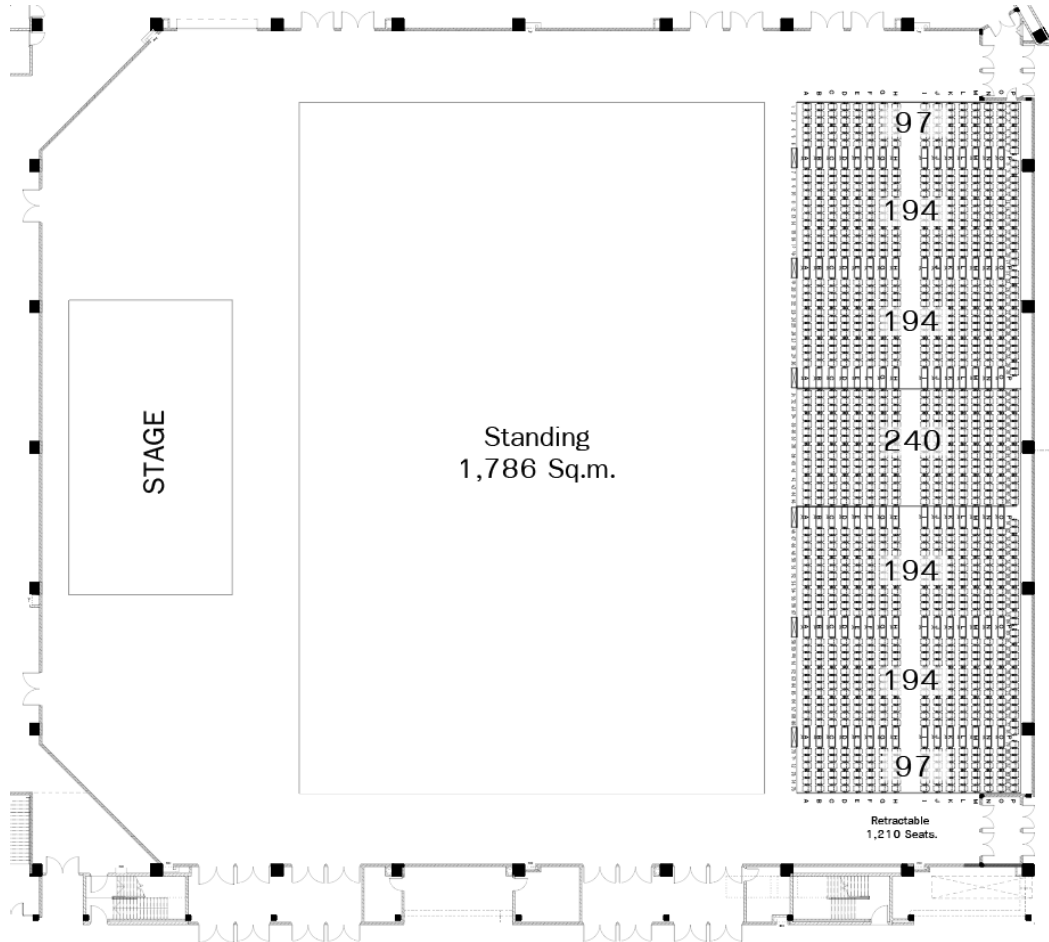


h) CENTRE STAGE MODE B: 3,568*

2,488 floor seats

1,120 retractable seats with control desk of 5.60m x 8.50m in the middle of retractable seats

*Subject to final production overlay and seating plan

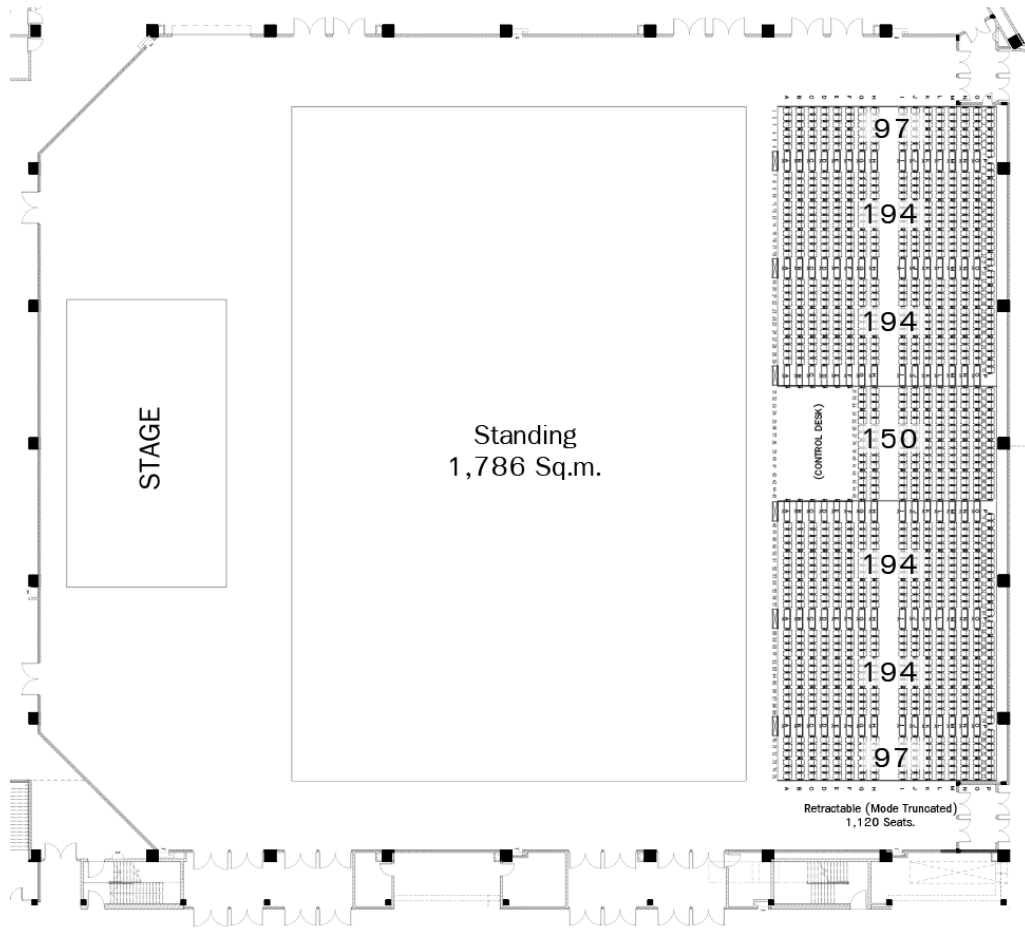


i) STANDING & RETRACTABLE MODE 5,675 Pax*

4,465 standing, based on 1,786m² floor area x 2.5 people per square meter

1,210 retractable seats

*Subject to final production overlay and seating plan

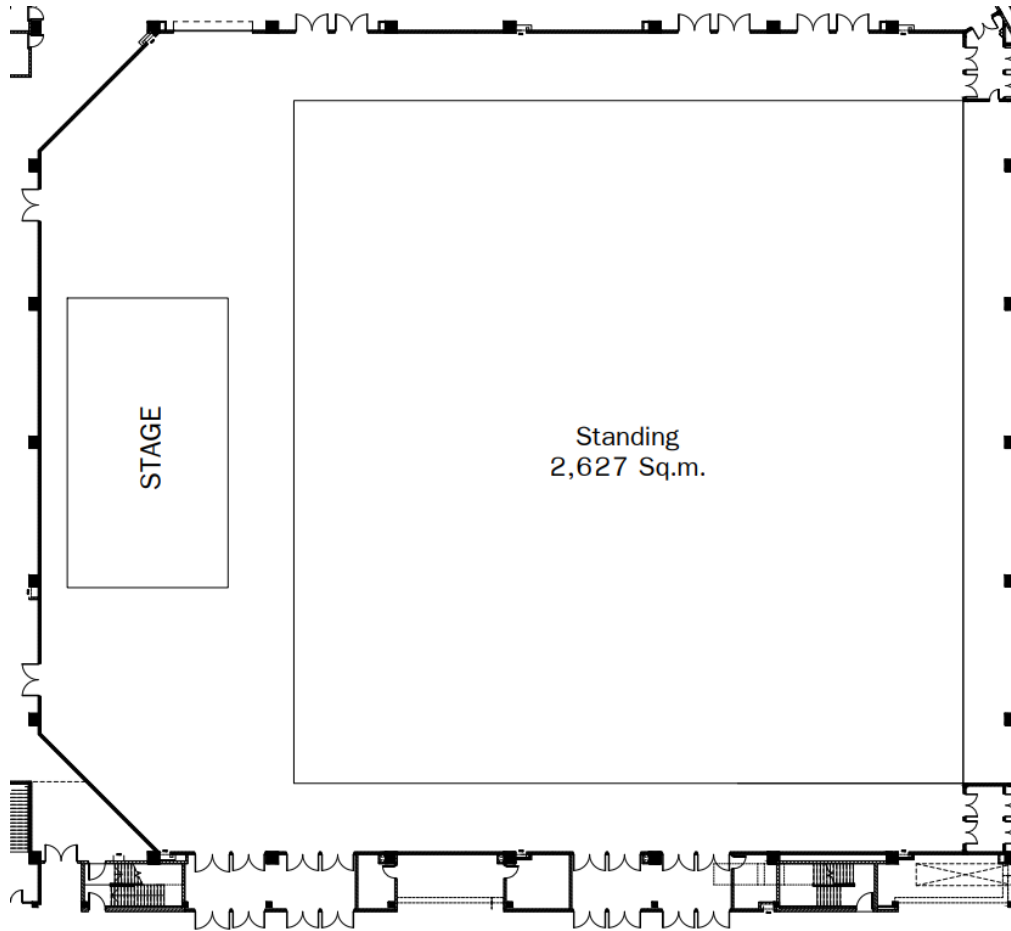


j) STANDING & RETRACTABLE MODE 5,585 Pax*

4,465 standing, based on 1,786m² floor area x 2.5 people per square meter

1,120 seats with control desk of 5.60m x 8.50m in the middle of retractable seats

*Subject to final production overlay and seating plan

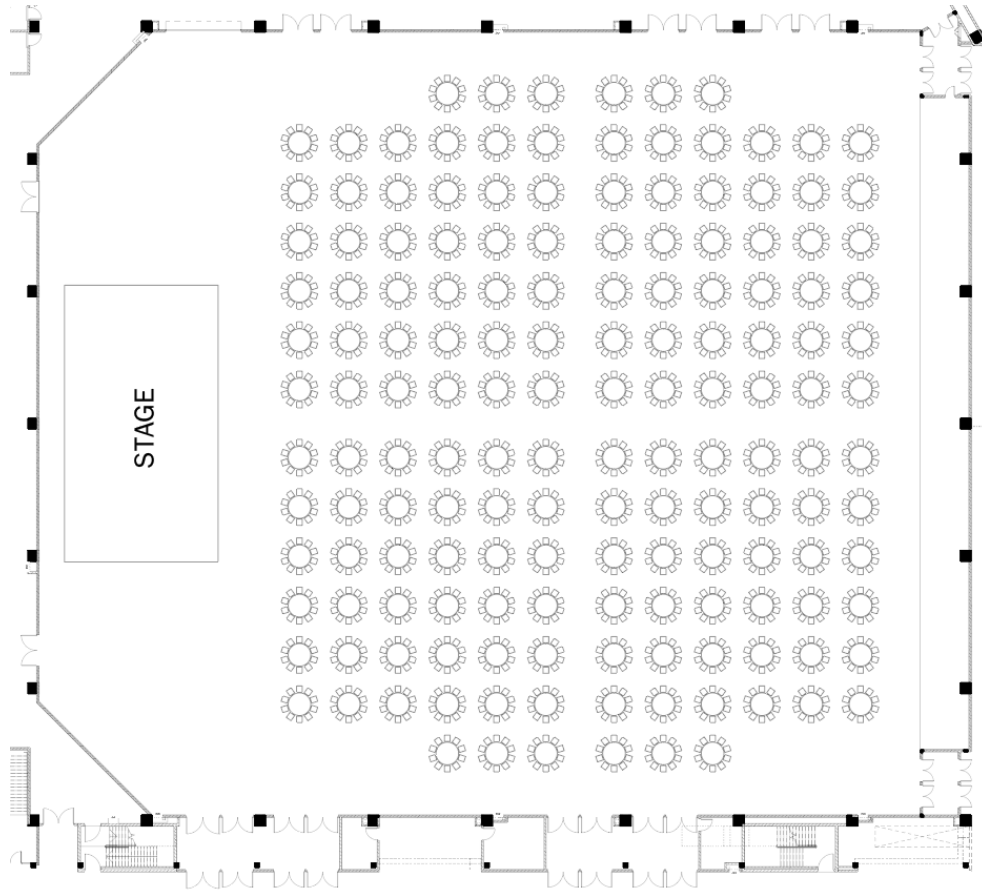


k) FULL STANDING MODE 6,000 Pax*

6,000 standing, based on 2,627m² floor area and limited by Fire Exit capacity

*Subject to final production overlay

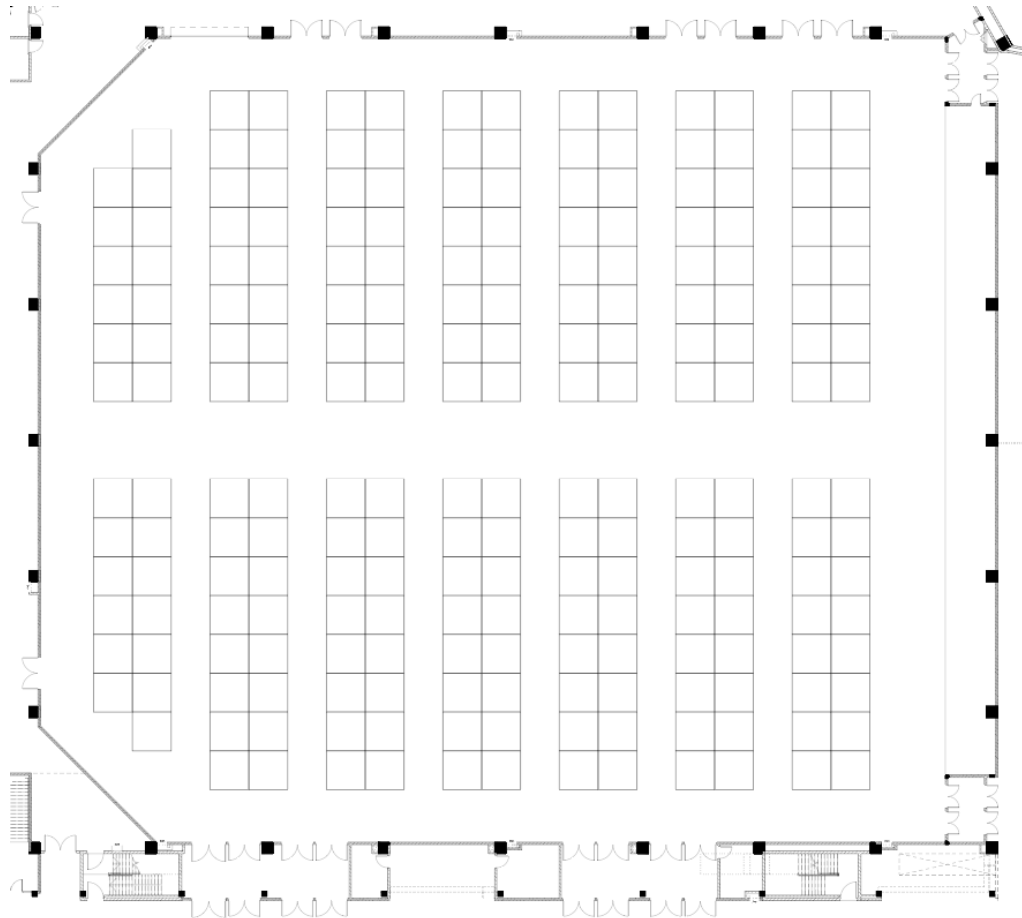
Opening Edition – January 2024



I) BANQUET MODE 1,560 Pax*

156 x 1.80 m. round tables
10 people per table

*Subject to final production overlay



m) EXHIBITION MODE

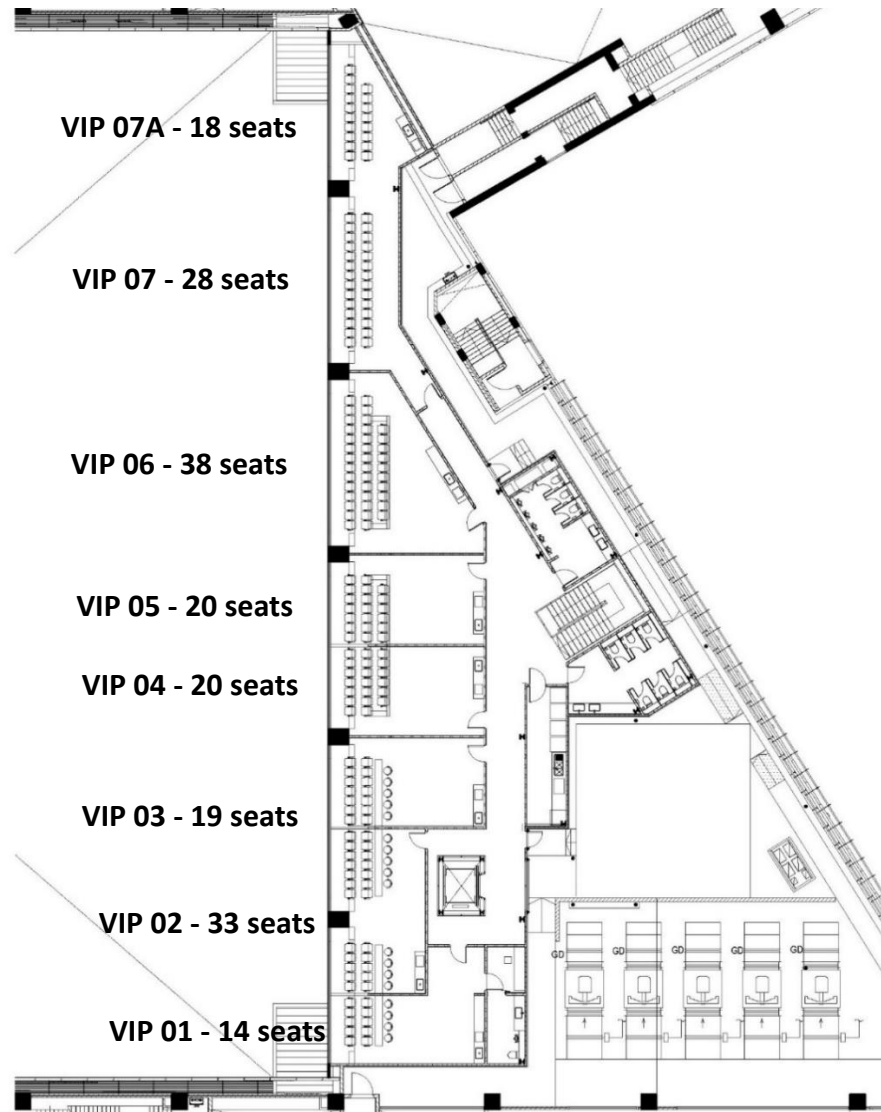
218 Exhibition Booths* measuring 3m x 3m can be accommodate with power and communication fiber to each booth

*Subject to final production overlay

Opening Edition – January 2024

23. VIP SUITES:

- The VIP Suites are located on the 6th floor Mezzanine Level. Access is by both exclusive lift and stairs. Toilet are situated on this level along with a small pantry. All Suites are off manifest and retained by UOB Live.



24. TECHNICAL INFORMATION

a) Stage

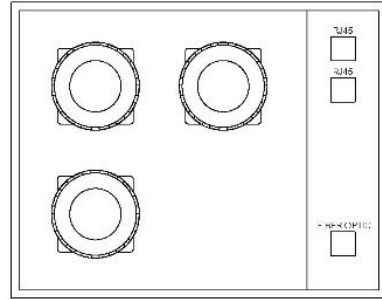
- ME – 3750 Rolling Stage System
- Made in the USA
- Dimension stage: 40' x 72' (12.19m x 21.9m)
- Height: 48" to 78" (1,981.2 mm to 1,219mm)
- Stage height adjustable
- Access Ramp set 0" to 72"
- Leg support made of fabricated from structural extruded aluminum tubing and from hot-rolled electric-welded steel tubing.
- Load Certified uniformly distributed live-load capacity of 4,000pounds per 4' x 8' section (125 pounds per square foot or 610.3 kgs/m²)

b) Crowd Barrier

- Heavy Duty Aluminum Barricade
- Made in Italy
- 58 units of LT CWB-B | 1,035 mm x 1,185 mm height aluminum barricade
- 6 units of LT CWB-BC | 1,035 mm x 1,185 mm cable pass thru
- 4 units of LT CWB-DC | 1,035 mm x 1,185 mm 700 mm width gates
- 4 units of LT CWB-VL | 922 mm x 1185 90 degree inside corners
- 8 units of LT CWB-V-CART | 10 barricade carts

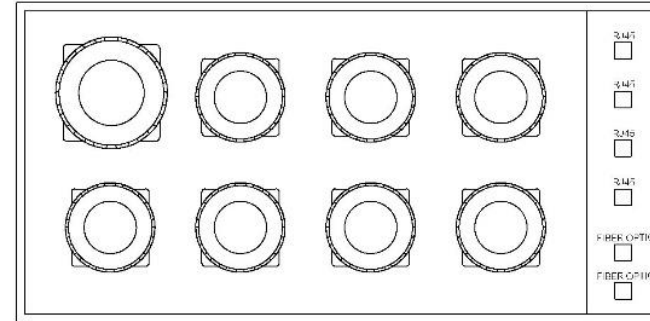
- c) Rigging
 - (60) Electric Hoist 1,000kg 20m chain length: Stagemaker model SL10 1004 m2 B D8
 - (60) Hanging device with I-beam or G-beam (CHD2000-CHD): Stagemaker model CHD 2000 - CHD
 - Control Unit
 - (4) 12ch 19", 6U controller without remote (Option): Stagemaker model 52861620
 - 8ch 19", 6U controller without remote (Option): Stagemaker model 52861618
 - (12) Splitter HE32 to power & control motor plug (x4): Stagemaker model 53277436
 - (8) Splitter HE6 to power & control motor plug: Stagemaker model 53226725
 - Production Control
 - There are tie-lines connecting the production control area with the stage including fibre-optics.
 - Wireless Control
 - Radio remote control: Remote for controller type R12SRB: Stagemaker model 53271584
 - Radio remote control: 32 channels radio receiver 19"2U for controller type R12RSRB: Stagemaker model 53271597
 - Radio remote control: 32 channels radio receiver 19"2U for controller type R8RSRB: Stagemaker model 53273018
 - Radio Load Cell
 - (8) Radio load cell: SRLM load cell (1,000kg SF 10:1): Stagemaker model 52885163
 - Suitcase for load cells (1 bag = 8 cells): Stagemaker model 53277415
 - Central radio HF in carrying case, USB connector, software, operation manual: Stagemaker model 53420200
 - PS, laptop, or tablet **(provided by Hirer)**
 - Power, control, and motor cable included in wireway and support: Power (Mennekes) cable (Yazaki)
 - Accessories for combine cabinet, main breaker circuit breaker, motor cable: Wireway (TIC) main breaker
 - Magnetic relay, main control: Circuit breaker (Schneider)
 - Other Items
 - Brackets, support track cable: Carol brand by Baan Rigging
 - Stopper hanging device: Carol brand by Baan Rigging

d) Power



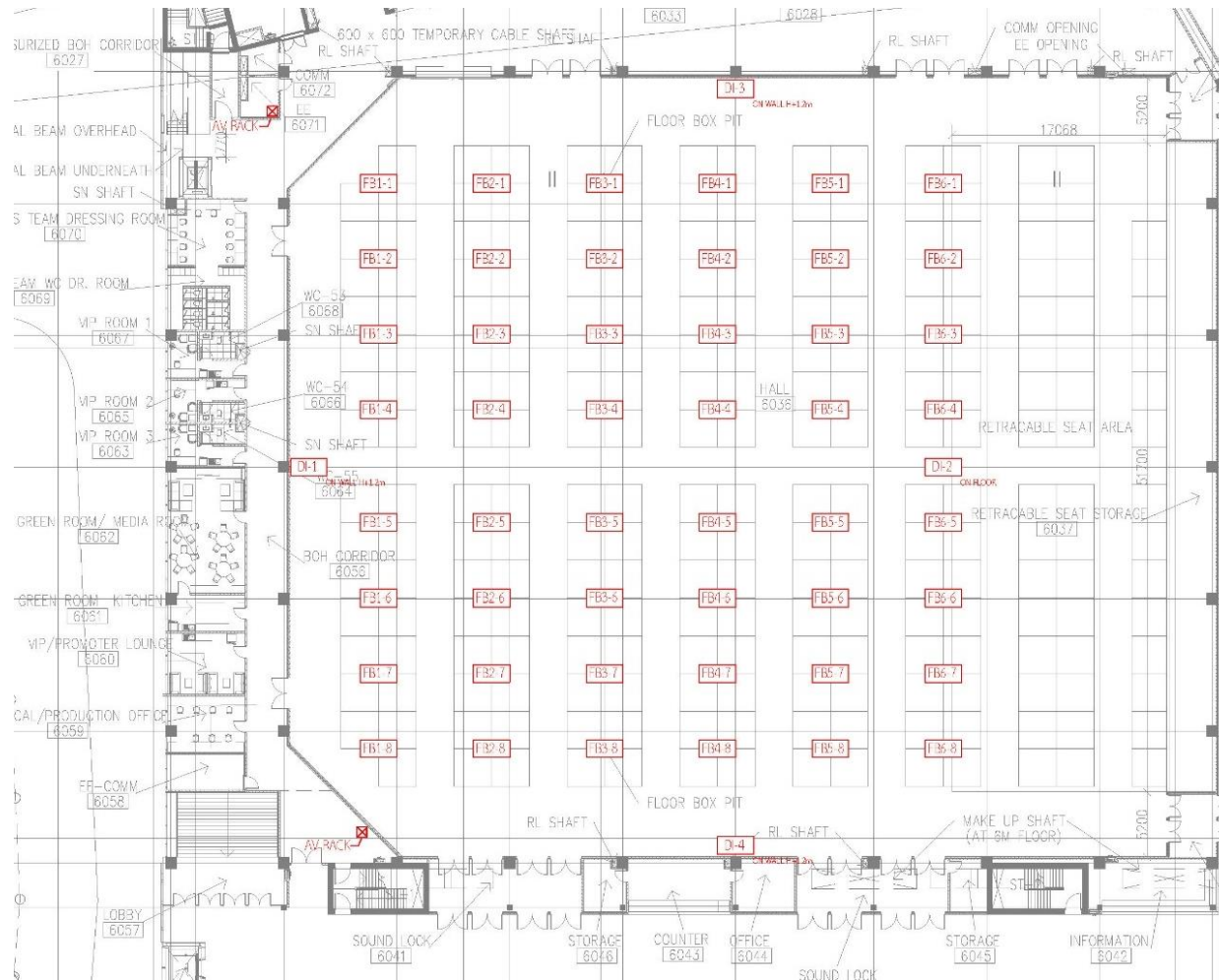
FLOOR BOX TYPE: FBX-Y
BOX DIMENSION: W500xD400xH300

- 1 x 32A THREE PHASE POWER PLUG
- 2 X 16A SINGLE PHASE POWER PUG
- 2 x RJ45 CONNECTOR
- 1 x FIBER OPTIC CONNECTOR

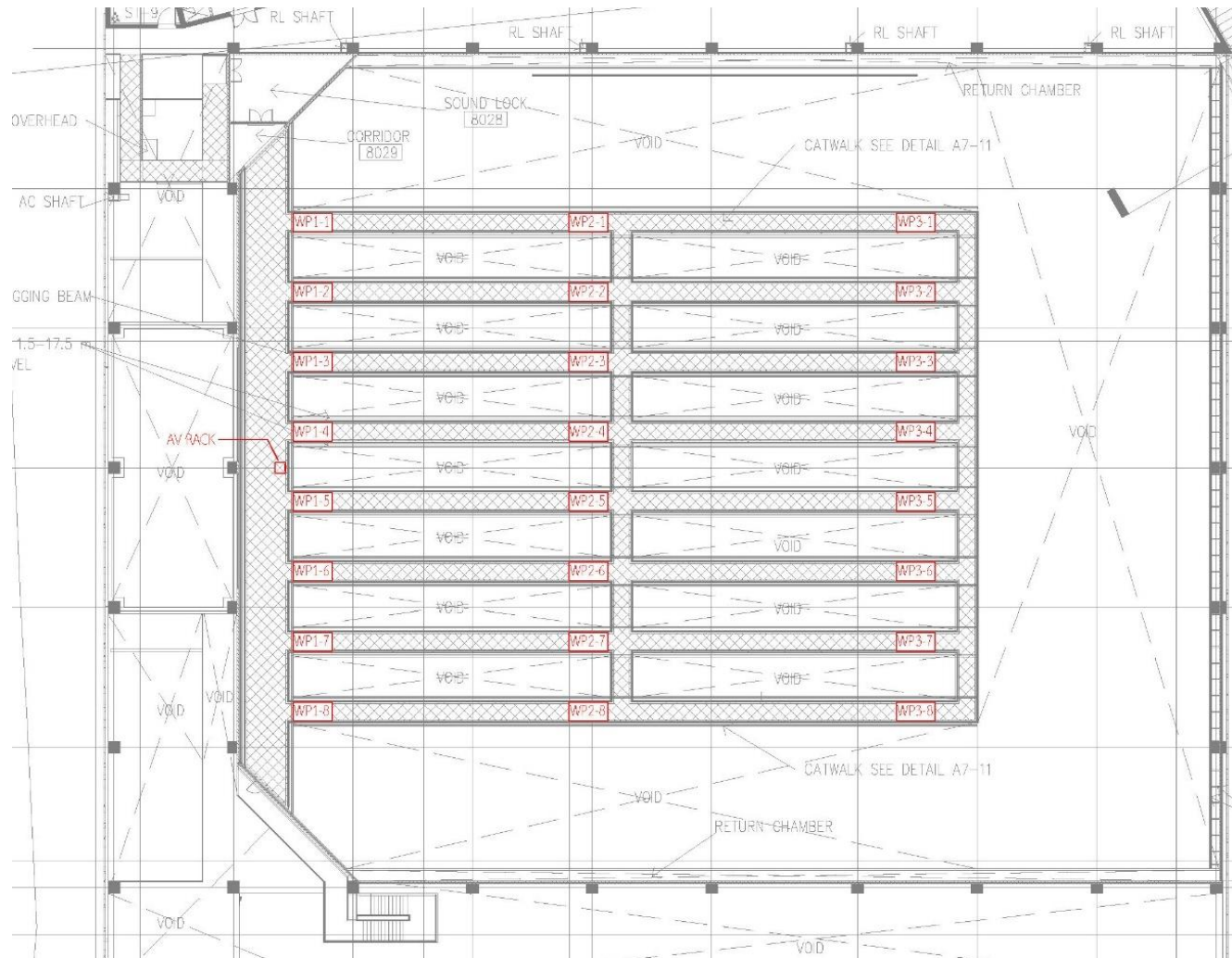


FLOOR BOX TYPE: DI-2
BOX DIMENSION: W800xD400xH300

- 1 x 63A THREE PHASE POWER PLUG
- 2 X 32A TWO PHASE POWER PUG
- 1 X 32A TWO PHASE POWER PUG (FOR AUDIO SYSTEM)
- 4 x 16A SINGLE PHASE POWER PLUG
- 4 x RJ45 CONNECTOR
- 2 x FIBER OPTIC CONNECTOR (DIRECT TO STAGE LOCATION)



Opening Edition – January 2024



Opening Edition – January 2024

e) Audio

Main System L R

- L-Acoustics K2 3-way full-range active WST® enclosure x 24
- L-Acoustics KARA II 2-way active WST® enclosure: 2 x 8" LF + 3" HF diaphragm x 6

Flown Subwoofer

- L-Acoustics KS28 Flyable subwoofer: 2 x 18" x 16

Delay

- L-Acoustics A15i FOCUS 2-way passive constant curvature WST® 10° enclosure: 15" LF + 3" HF diaphragm (installation version) x 6

Front Fill

- L-Acoustics A10 FOCUS 2-way passive constant curvature WST® 10° enclosure: 10" LF+ 2.5" HF diaphragm x 6

Stage Monitor System

- L-Acoustics X15 HiQ 2-way active coaxial enclosure: 15" LF + 3" HF x 12

Stage In-Fill System

- L-Acoustics A15 FOCUS 2-way passive constant curvature WSt enclosure: 1 x 15" LF + 3" HF diaphragm x 4
- L-Acoustics KS21 High power compact subwoofer: 1 x 21" x 4

Near Field Monitor System for FOH and Monitor Mix engineer

- L-Acoustics 108P Self-powered coaxial enclosure: 8" LF + 1.5" HF diaphragm x 4

Amplifier

- L-Acoustics LA 12X CE Amplified controller with PFC 4 x 2600 W/4 Ohms, AES/EBU, Ethernet x 19
- L-Acoustics LA 4X CE Amplified controller with PFC 4 x 1000 W/8 Ohms, AES/EBU, Ethernet x 2

Processor

- L-Acoustics P1 CE Digital audio processor and measurement platform x 1
- L-Acoustics LS10 CE 10-port AVB Switch x 6

Mixing Console

- DiGiCo X-Q338 32 Bit Quantum 338 surface 36+2 faders,HMA optics, 2 DMI slots, 2 PSU x 2
- DiGiCo SD Rack Stage SD-Rack,HMA optics, 2 BNC MADI,dual PSU -56 32bit input/40 32bit Output 16 AES Outputs x 2

Wireless microphone

- Sennheiser EW300 G4-865S Handheld Wireless Microphone Condenser, Super-Cardioid x 10
- Sennheiser EW300 G4-HEADMIC1 Headworn Wireless Microphone x 6

f) Lighting

UOB Live provides the following within the rental fee subject to contractual arrangements.

Fixtures

- 16 x ACME: BSW500
- 6 x ACME: BSW200
- 42 x ACME: WASH500
- 20 x ACME: BL200 WW2
- 10 x ACME: TS300 CW

Lighting Control Accessories

- 1 x MA Lighting: grandMA3
- 14 x ACME: CA-DS18II
- 3 x ACME: CA-EN28
- 1 x Computer with program

Lighting Structure & Accessories

- 42 x Truss 40cm x 40cm x 3cm: Local
- 1 x Truss hanging support
- 94 x Lighting hanging support and safety sling: Local
- 40 x 3-Pin DMX cable 2m: Beldin + Neutrik, 8760 top series
- 20 x 3-Pin DMX cable 5m: Beldin + Neutrik, 8760 top series
- 10 x 3-Pin DMX cable 10m: Beldin + Neutrik, 8760 top series
- 5 x 3-Pin DMX cable 20m: Beldin + Neutrik, 8760 + Top series
- 5 x 3-Pin DMX cable 40m: Beldin + Neutrik, 8760 + Top series
- 5 x 3-Pin DMX cable 60m: Beldin + Neutrik, 8760 + Top series
- 5 x 3-Pin DMX cable 80m: Beldin + Neutrik, 8760 + Top series
- 5 x 3-Pin DMX cable 100m: Beldin + Neutrik, 8760 + Top series

THANK YOU

UOB LIVE
628 Sukhumvit Road
6th Floor Emsphere
Klong Tan, Klong Toey
Bangkok 10110, Thailand

Disclaimer

This document is a guide to providing all production-related people with the technical information required to produce events at UOB Live. At the time of publication UOB Live is under construction, and all information is subject to final confirmation during the venue hiring process.

Opening Edition – January 2024

Page 38 of 38